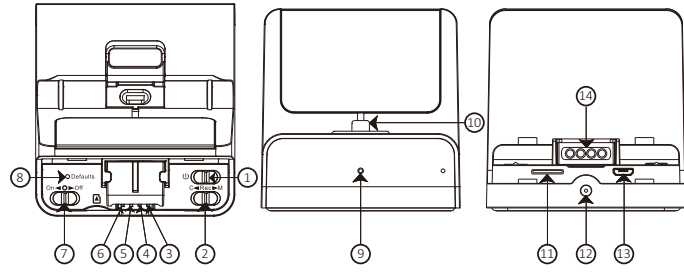


1. Names and Parts

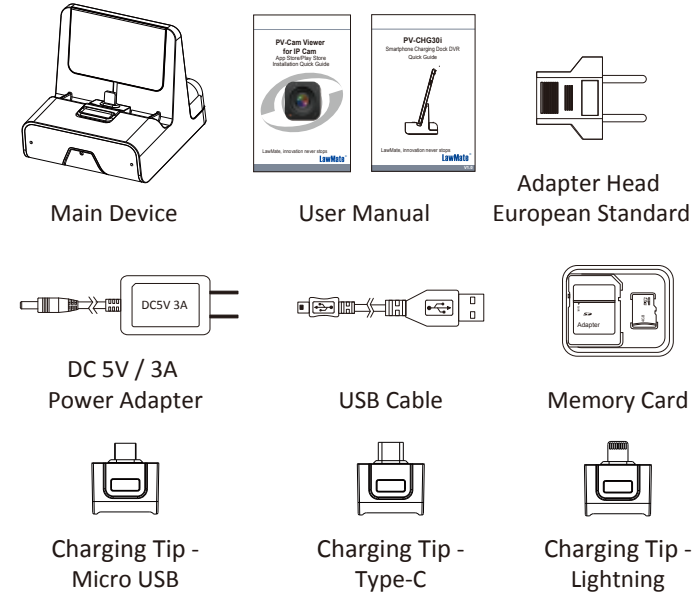


- | | |
|--|-----------------------------|
| 1. Power On / Off | 8. Default Button |
| 2. Continuous Rec / Motion Detection Rec | 9. Lens |
| 3. Power (Blue) LED | 10. Changeable Charging Tip |
| 4. Record (Red) LED | 11. Memory Card Slot |
| 5. Wi-Fi (Orange) LED | 12. DC 5V In |
| 6. IP (Green) LED | 13. USB Port |
| 7. Wi-Fi Switch | 14. Backup Charging Tip |

- ※ No microphones are available for USA market!
- ※ Do not remove serial number sticker! Warranty is invalid if the sticker is tampered.

1

2. Package Content



3. Recording Operation

- 3.1 Insert memory card into memory card slot (11).
- 3.2 Connect one side of the adapter into (12), and plug the other side into an electrical outlet.

2

- 3.3 Slide power switch (1) to turn on the device. Blue LED (3) will be on and system initialization will take around 40 seconds.
 - 3.4 After system initialization, with the presence of the red LED (4), it indicates that the recording mode is on.
 - 3.5 To turn on Wi-Fi, slide (7) to the left and orange LED (5) will be blinking. Device is ready for Wi-Fi (P2P) connection. For more details about the P2P and IP connection guide, please refer to IP Quick Guide.
 - 3.6 Default
 - 3.6.1 To set the password & SSID back to default settings, press default button (8) longer than 4 seconds and less than 10 seconds. You will see the red (4) / orange (5) / green (6) LED turning on and off at the same time. After 40 seconds, the presence of the flashing orange LED indicates that the unit is ready to start P2P connection again. (P2P password: 88888888)
 - 3.6.2 To set all the settings back to factory default, press the default button longer than 10 seconds. You will see the red (4) / orange (5) / green (6) LED turning on and off at the same time. After 40 seconds, all the settings will be back to factory default settings.
- ※ Please note that the operation less than 4 seconds will be invalid.

3

- ※ Please note that each time the device is switched to P2P or IP connection, the system initialization will take around 40 seconds.

4. LED Indicators

LED Indicators	Device Status
Solid Blue LED	Device On
Solid Red LED	Recording
Blinking Orange LED	Searching Wi-Fi
Solid Orange LED	Wi-Fi Connected
Solid Green LED	IP Connected

5. Continuous /Motion Detection Recording

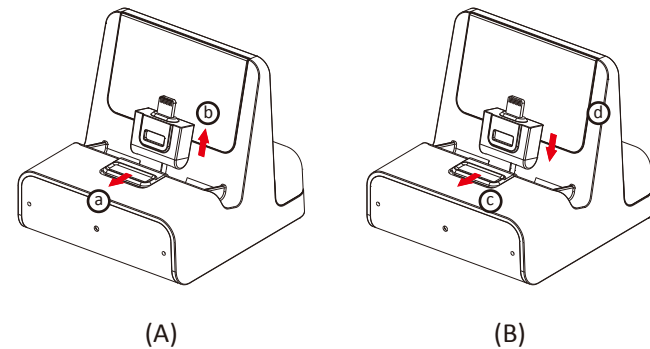
- 5.1 For Continuous Recording Mode, please swipe (2) to the left.
- 5.2 For Motion Detection Recording Mode, please swipe (2) to the right. After 10 seconds of system initialization, the unit will be ready for motion detection recording. Once the unit detects a moving object, it will start the recording and the red LED (4) will be on.
- 5.3 For snapshot function, please refer to IP Quick Guide.

4

6. Change Charging Tip

- 6.1 Beyond being a hidden camera, the unit can actually function as a working smartphone charger. It charges your phone like a normal docking.

- ※ Please note that when you try to charge your phone through the unit, the power your phone receives will be less than when connecting to its original charger.



- 6.2 To remove the charging tip (Illustration A), pull back the release catch (a) and take out the charging tip (b).
- 6.3 To install a charging tip (Illustration B), pull back the release catch (c) and insert charging tip (d).

5

7. Retrieving Video Footage

Video files are stored in the memory card, there are two ways to retrieve.

- (1) Remove memory card from DVR and insert memory card into a card reader or memory card slot in your PC. Computer detects the storage and user may browse and operate the storage as typical folder directory.
- (2) Connect the micro USB end of a USB cable to the device, and the other end to your PC. Computer will detect the storage.

- ※ Please note that video files will be named as V+year+month+time; e.g. V20210716010101

8. Date and Time Setting (for Windows System)

- 8.1 From the desktop, right-click to open Notepad, create a text file named settime.txt
- 8.2 On the first line of the file, enter date and time information as year.month.day hours.minutes.seconds. For example, suppose the time is July 16, 2021 14:30. Then enter 2021.07.16 14:30:00
- 8.3 Save the file to the root directory of the memory card.
- 8.4 Insert the memory card into the slot, and power on the device. The date and time setting is now completed.

- ※ Please note that when date and time setting is completed, the settime.txt file should not be visible when you connect the device to computer again.

6

9. Specification

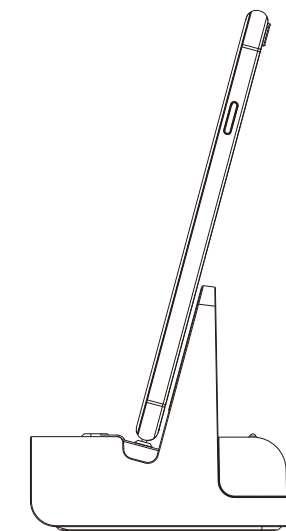
Built-in Camera Module	
Built-in Image Sensor	1/2.9" progressive CMOS sensor
Sensor Resolution	2000x1121
Sensor Sensitivity	0.1 Lux @ F 2.0
Lens F/No.	F 2.0
Focal Length	4.3mm
Angle of View	78.2°
Video Spec.	
Algorithm	H.264, JPEG
File Format	MOV, JPG
Video Recording Mode	Auto/Manual/Motion Detection
Recording Capability	1920x1080, 1280x720, 854x480
Frame Rate	Up to 30 fps
Photo Capability	2M(1600*1200)
Wi-Fi	
Wi-Fi	Built-in Wi-Fi Module(IEEE 802.11b/g/n)
Wi-Fi Protocol	TCP/IP
Storage & I/O	
Memory Type	Memory Card (Support up to 32GB)
Data Interface	Mini USB 2.0
Misc.	
Date/Time Table	YYYY/MM/DD, HH:MM:SS
Snapshot	recording and playback video (via smartphone)
Power	
Power Input	DC5V 3A
Recording time	500min @ 1920x1080 resolution (16GB memory card)
Physical	
Weight	160g

7

PV-CHG30i

Smartphone Charging Dock DVR

Quick Guide



LawMate, innovation never stops

LawMate®

V1.0